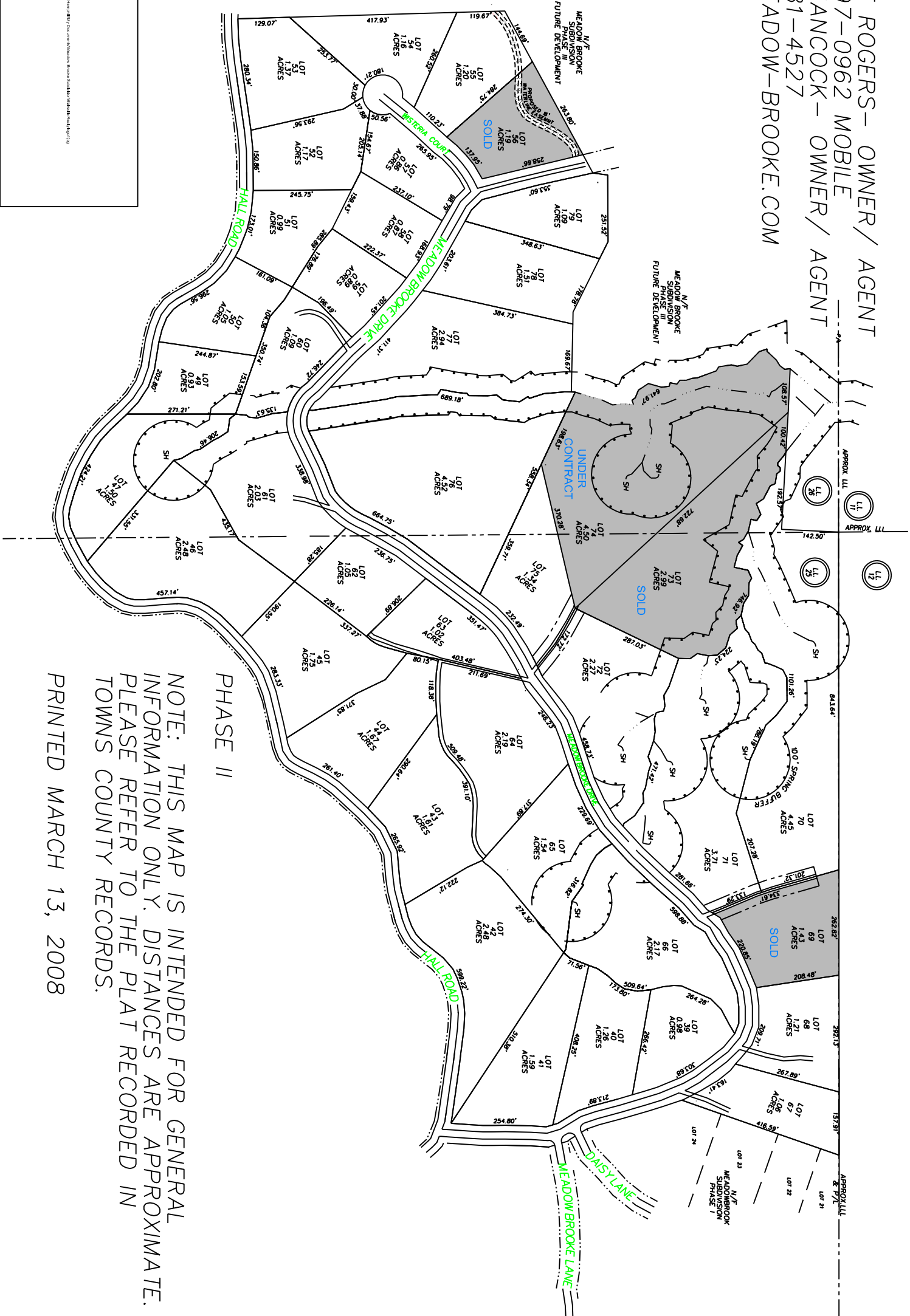


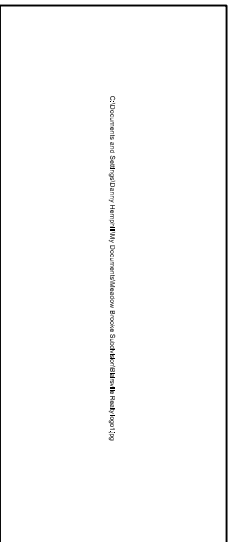
ROBERT ROGERS - OWNER / AGENT
 706-897-0962 MOBILE
 DAVE HANCOCK - OWNER / AGENT
 706-781-4527
 WWW.MEADOW-BROOKE.COM



PHASE II

NOTE: THIS MAP IS INTENDED FOR GENERAL INFORMATION ONLY. DISTANCES ARE APPROXIMATE. PLEASE REFER TO THE PLAT RECORDED IN TOWNS COUNTY RECORDS.

PRINTED MARCH 13, 2008



Copyright © 2008 by Robert Rogers. All rights reserved. This map is intended for general information only. Distances are approximate. Please refer to the plat recorded in Towns County Records.